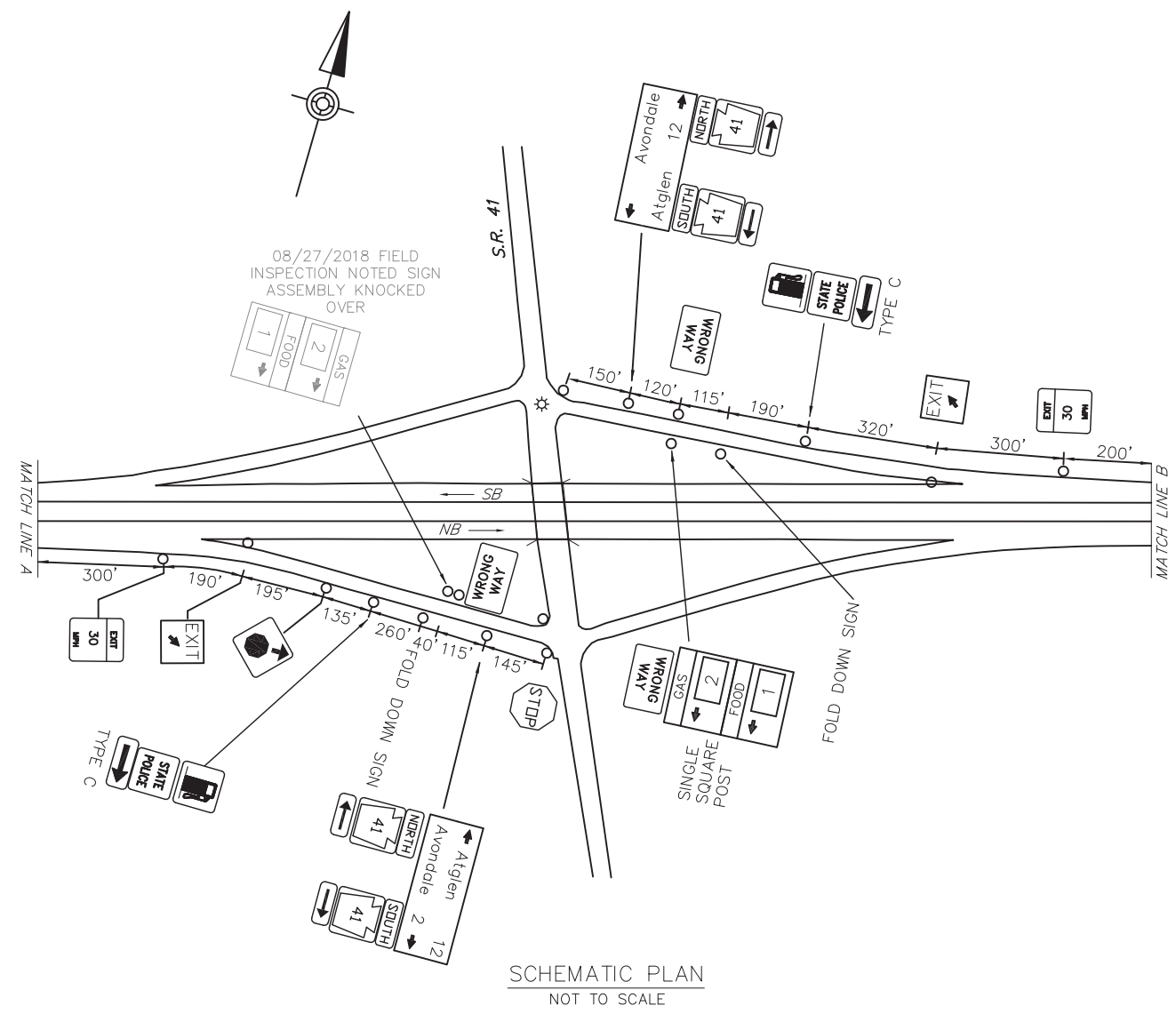
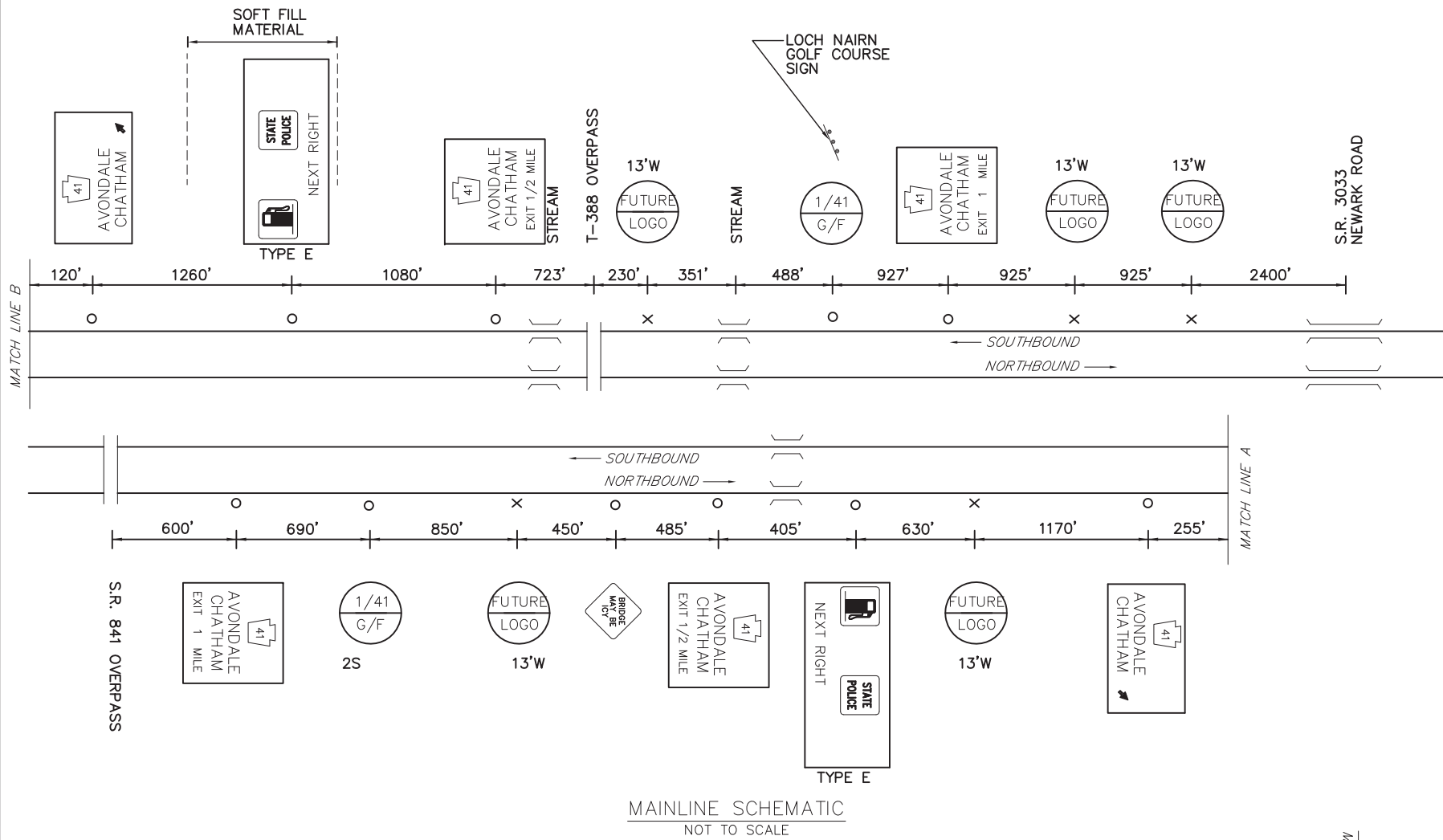


| DISTRICT | COUNTY | ROUTE | PROJECT | SHEET |
|-----------------------|---------|-------|---------|-------|
| 6-0 | CHESTER | US-1 | | |
| LONDON GROVE TOWNSHIP | | | | |
| REVISIONS | | | | |
| | | | | |
| | | | | |

| TABULATION OF QUANTITIES | | |
|--|--------|----------|
| ITEM | UNIT | QUANTITY |
| POST MOUNTED SIGNS, TYPE A, LOGO | SQ.FT. | |
| POST MOUNTED SIGNS, TYPE B, LOGO | SQ.FT. | |
| POST MOUNTED SIGNS, TYPE C, LOGO | SQ.FT. | |
| BREAKAWAY SYSTEMS | EACH | |
| * STEEL S OR W BEAM POSTS | LBS. | |
| LOGO SIGN MOUNTING | EACH | |
| REMOVAL OF POST MOUNTED MOTORIST SERVICE SIGNS, TYPES A & E | EACH | |
| REMOVAL OF POST MOUNTED MOTORIST SERVICE SIGNS, TYPES B, C & F | L.S. | |

* APPROXIMATE QUANTITY FOR INFORMATION ONLY

| SYMBOLS | |
|---------|------------------------------|
| ○ | Existing Sign to Remain |
| △ | Existing Sign to be Removed |
| ◻ | Existing Sign Reset as Shown |
| ● | NEW SIGN |
| × | FUTURE SIGN |
| ⊗ | Existing Utility Pole |



| AVONDALE SPECIFIC INFORMATION PANEL | | | |
|-------------------------------------|--------|---------------------------|-----------|
| SIGN NUMBER | LEGEND | BUSINESS | LOGO. NO. |
| 1/41 F NB | FOOD | PERKINS FAMILY RESTAURANT | 1 |
| 1/41 F SB | | | |
| 1/41 G NB | GAS | WAWA (24 Hours) | 2 |
| 1/41 G SB | | | |



D:\BIDDING\2018\AVONDALE\AS-BUILD\DRAWINGS\PERMITS\DISTRICT 06\CHESTER - ISD\KK-SHFXL\01 AVONDALE EXIT PLAN September 14, 2018 9:42 AM