

DISTRICT	COUNTY	ROUTE	PROJECT	SHEET
4-0	PIKE	I-84		
MILFORD BORO AND DINGMAN & MILFORD TWPS.				
REVISIONS				

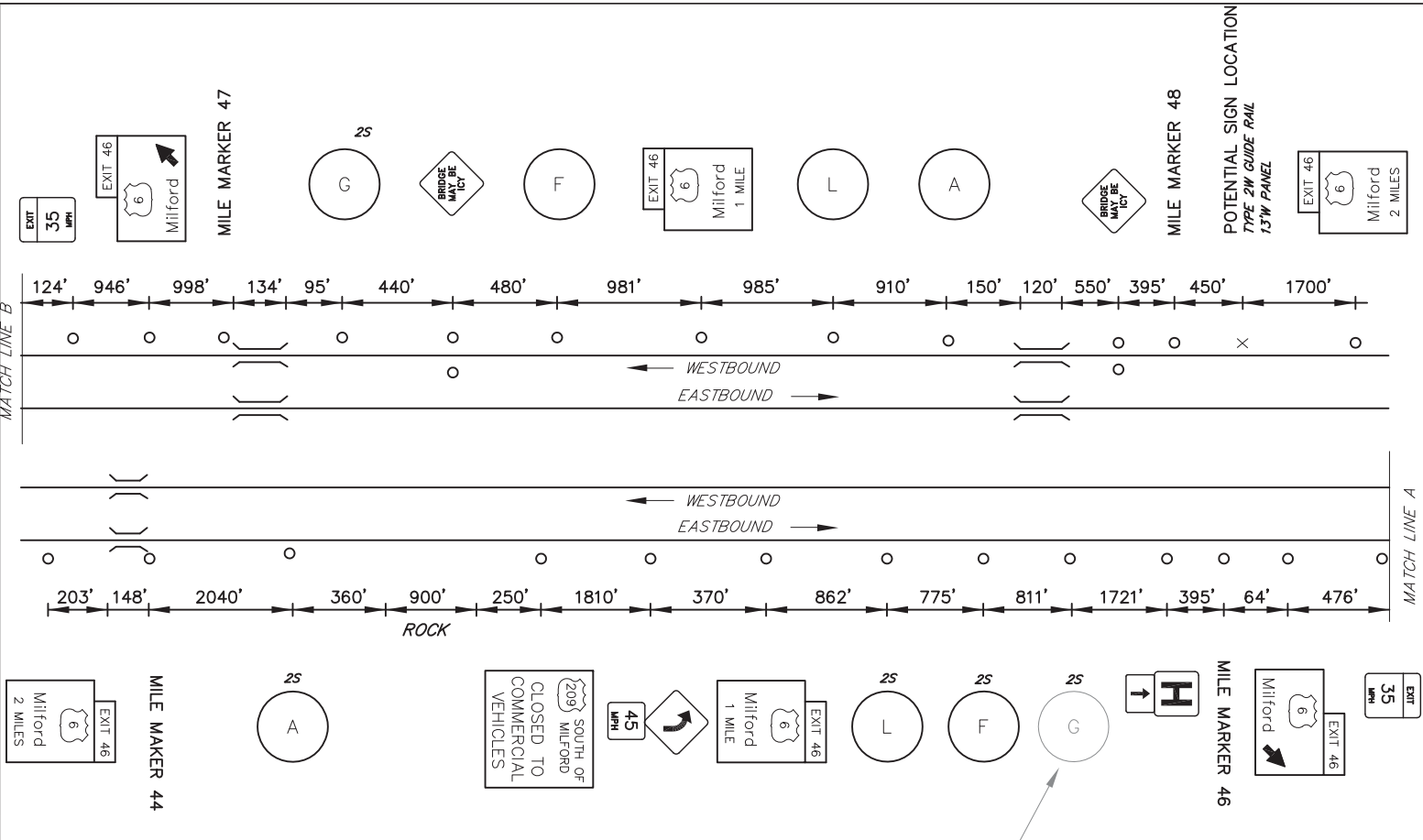
SYMBOLS

- Existing Sign to Remain
- △ Existing Sign to be Removed
- Existing Sign Reset as Shown
- NEW SIGN
- ✕ FUTURE SIGN

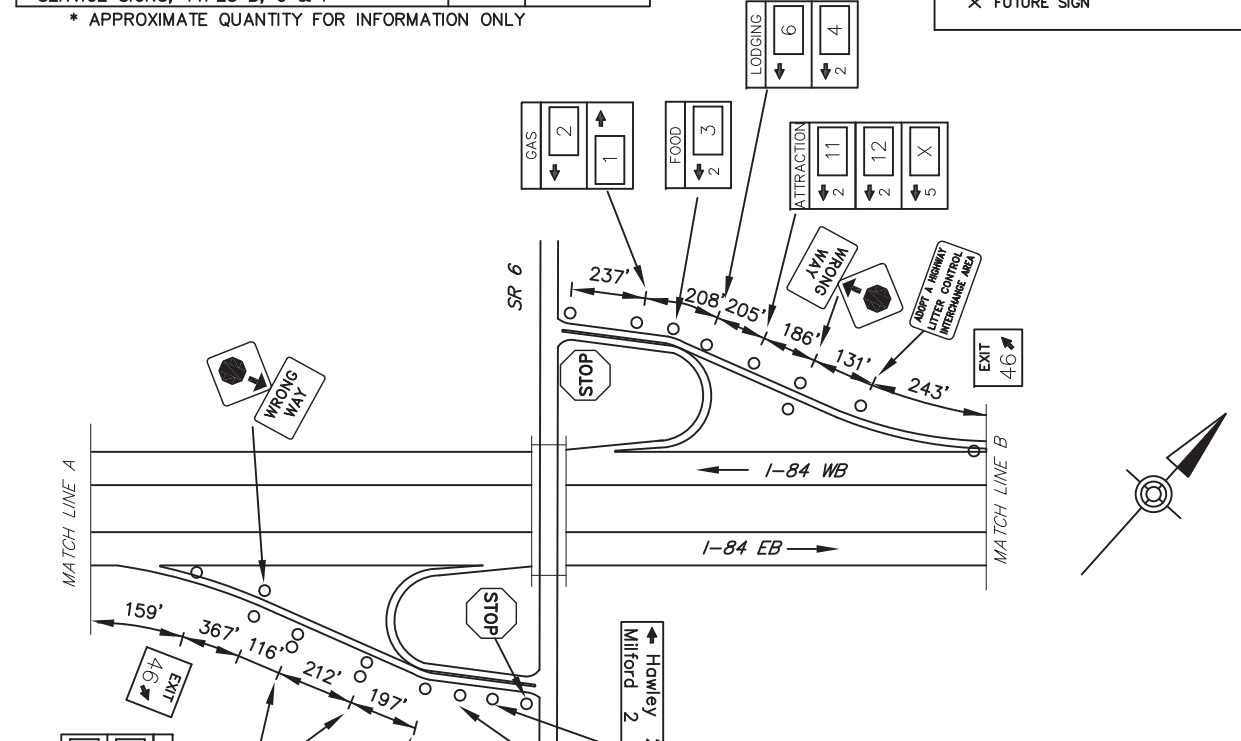
TABULATION OF QUANTITIES

ITEM	UNIT	QUANTITY
POST MOUNTED SIGNS, TYPE A, LOGO	SQ.FT.	
POST MOUNTED SIGNS, TYPE B, LOGO	SQ.FT.	
POST MOUNTED SIGNS, TYPE C, LOGO	SQ.FT.	
BREAKAWAY SYSTEMS	EACH	
* STEEL S OR W BEAM POSTS	LBS.	
LOGO SIGN MOUNTING	EACH	
REMOVAL OF POST MOUNTED MOTORIST SERVICE SIGNS, TYPES B, C & F	L.S.	

* APPROXIMATE QUANTITY FOR INFORMATION ONLY



MAINLINE SCHEMATIC
NOT TO SCALE



SCHEMATIC PLAN
NOT TO SCALE

LEGEND

2S - GUIDE RAIL

EXIT 46 SPECIFIC INFORMATION PANEL

LEGEND	DIRECTION	BUSINESS	LOGO. NO.
GAS	EB/WB	SUNOCO (DIESEL)	1
		FUTURE 12'	
		EXXON (DIESEL)	2
FOOD	EB/WB	APPLE VALLEY FAMILY RESTAURANT	3
LODGING	EB/WB	HOTEL FAUCHERE	4
		RODEWAY INN	6
ATTRACTION	EB/WB	MILFORD HISTORIC DISTRICT	11
		GREY TOWERS HISTORIC SITE	12

08/29/2019 FIELD INSPECTION NOTED MAINLINE SIGN KNOCKED OVER

07/24/2019 FIELD INSPECTION NOTED SUNOCO (1) LOGO MISSING

EB SIGNS

10'Hx16'W 48"W LOGO FUTURE 12' W10x26 A572 B650 - #2, #1 SPLIT BASE RETROFIT

GAS - EXIT 46	2	1	1	X
---------------	---	---	---	---

10'Hx19'W W10x22 A572 3M TYPE III B650 - #2, #2

FOOD - EXIT 46	3	*		
----------------	---	---	--	--

10'Hx19'W W8x18 A572 3M TYPE III B525 - #1, #2

LODGING - EXIT 46	6	4	*
-------------------	---	---	---

10'Hx13'W FUTURE 16'H W14x30 A572 3M TYPE III B650 - #2, #1

ATTRACTION-EXIT 46	11	12	X
--------------------	----	----	---

WB SIGNS

10'Hx16'W 48"W LOGO W8x21 B525 - #1, #2

GAS - EXIT 46	1	2	X
---------------	---	---	---

9.5'Hx16'W W8x18 A572 3M TYPE III B525 - #2, #2

FOOD - EXIT 46	3		
----------------	---	--	--

10'Hx19'W FUTURE 12'H W8x21 A572 3M TYPE III B525 - #1, #1

LODGING - EXIT 46	6	4
-------------------	---	---

6'Hx19'W FUTURE 12'H W12x26 A572 3M TYPE III B650 - #2, #2

ATTRACTION-EXIT 46	11	12	X
--------------------	----	----	---

* FILL THIS SPOT LAST DUE TO CHEVRON SIGN PARTIALLY BLOCKING VIEW.

BY: BLM, JLN, SWS, C/S, A/V, M/V, S/S, A/S, B/S, L, DRAWINGS: PENNDOT, DISTRICT GRAPHIC - STVLV:XXX SHP:XXX-BM_EXIT 46 PLAN September 20/2019 11:37 AM

U.S. ROUTE 6 / MILFORD
EXIT 46

08/08/2019 FIELD INSPECTION NOTED BACKPANEL AND LOGO MISSING

SCHOCOPEE ROAD

Black Walnut Bed&Breakfast 1 TODS 48"W x 16"H

Grey Towers Historical Site MODIFIED D7-4 72"W x 24"H WHITE ON BROWN TRAILBLAZER

Grey Towers Historic Site 48"W x 16"H WHITE ON BROWN TODS

SR 2017

SEVENTH STREET

Malibu Dude Ranch 3 TODS 48"W x 16"H

TODS

Mt. Haven Resort 4

Old Lumberyard Shops & Antiques 4

Eckert's

SR 2001 SIXTH ST.

Turkey Hill

Grey Towers Historic Site 1/2 48"W x 16"H

Black Walnut Bed&Breakfast 1

BROAD ST.